

CERTIFICATE OF LOCATION OF GOVERNMENT CORNER

NORTH QUARTER Corner of Section 27, Township 108N, Range 39W

5th Principal Meridian, State of Minnesota, County of MURRAY

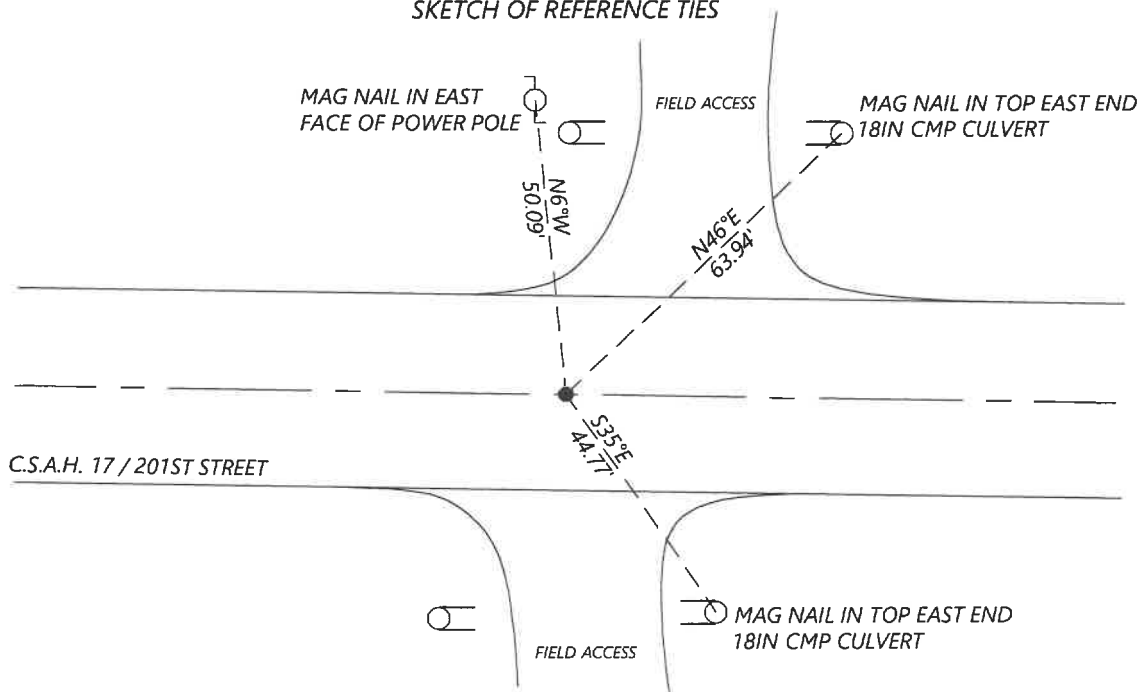
At the corner location shown on the sketch:

On 8/28/2020 found a MAG NAIL FLUSH IN CENTERLINE OF BITUMINOUS
DATE

left monument as found lowered monument removed monument (explain)

On _____ placed a _____
DATE

SKETCH OF REFERENCE TIES



Statement of evidence for this corner location is on back of this page.

I hereby certify that this document was researched and prepared by me or under my direct supervision and that I am a licensed Land Surveyor under the laws of the State of Minnesota.

Signature [Handwritten Signature]

Date 6/17/2021 License No. 45874

Title:

- Land Surveyor Professional Engineer
- County Surveyor County Engineer

OFFICE OF THE COUNTY RECORDER

County of Murray

I hereby certify that this document was filed in the Co.

Recorder's office at _____ M. on the _____ day of _____ A.D. 20

County Recorder Karen Brown
by JUN 22 2021, Deputy

DOCUMENT NO. _____

Statement of Evidence:

North Quarter Corner of Section 27, Township 108 North, Range 39 West, 5th Principal Meridian, Murray County, Minnesota.

1861 *July, GLO Notes: Set post in mound.*

1924 *July, Survey record for Section 27 shows a fence corner 33.6ft N and 33.0ft S.*

Undated, Highway Department records show that they dug with a backhoe and found nothing.

2003 *April, Road plans for CSAH 17 show the corner at PI station 79+45.24.
Coordinates: N: 205773.14 E: 566630.64*

2020 *September, Westwood Professional Services searched and found a mag nail in road centerline and inline with the field lines to the North and South. Coordinates fit well with the road plans and was accepted as the corner and set reference ties.*

Analysis of the recovered data, field evidence and survey measurements, indicates that the monument found is the correct perpetuation of this corner. For additional information concerning this corner please contact Westwood Professional Services.